



**Hollander**

kantoorwensen op maat

# Matrix Pro single

## SpecsHEET

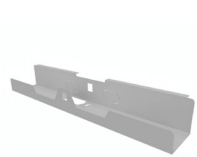


## Matrix Pro single specsheet



|  |                                 |
|--|---------------------------------|
| <b>Electric sit/stand:</b>             | 64 - 129 cm high (65 cm stroke) |
| <b>Standby power use:</b>              | 0.1 W per desk                  |
| <b>Power supply:</b>                   | DC 20 V per desk                |
| <b>Motor system comply ROHS noise:</b> | 48 dB                           |
| <b>Adjustable frame width:</b>         | 120 - 180 cm length             |
| <b>Table top depth:</b>                | 75 - 90 cm depth                |
| <b>Maximum load:</b>                   | 61 kg per leg                   |
| <b>Maximum speed:</b>                  | 36 mm/s                         |
| <b>Leg size:</b>                       | 60 mm x 95 mm                   |

### Cable management - optional



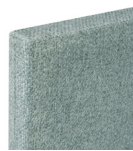
Cablegutter



Cable spine



### Acoustics - optional



E-Panel



MyScreen

### Height adjustable



Standard with up & down button.



Digital handset available as option.

### Matrix Pro frame colors



Black



White



Silver

### Electronics - optional



Mediahub



Q4 1 x Zoom 102

### Worktops



Black



White



Grey



Beech

**Totaal 13 verschillende kleuren bureaubladen leverbaar**

